

Install of Stand-Alone-Version of TSUtil together with Route-Riter

Identify the installation-File. Get it if needed and extract it from archive.



Identify the location of the destination directory. This is an example. The correct destination-folder has to be identified due to your Route-Riter-Installation:

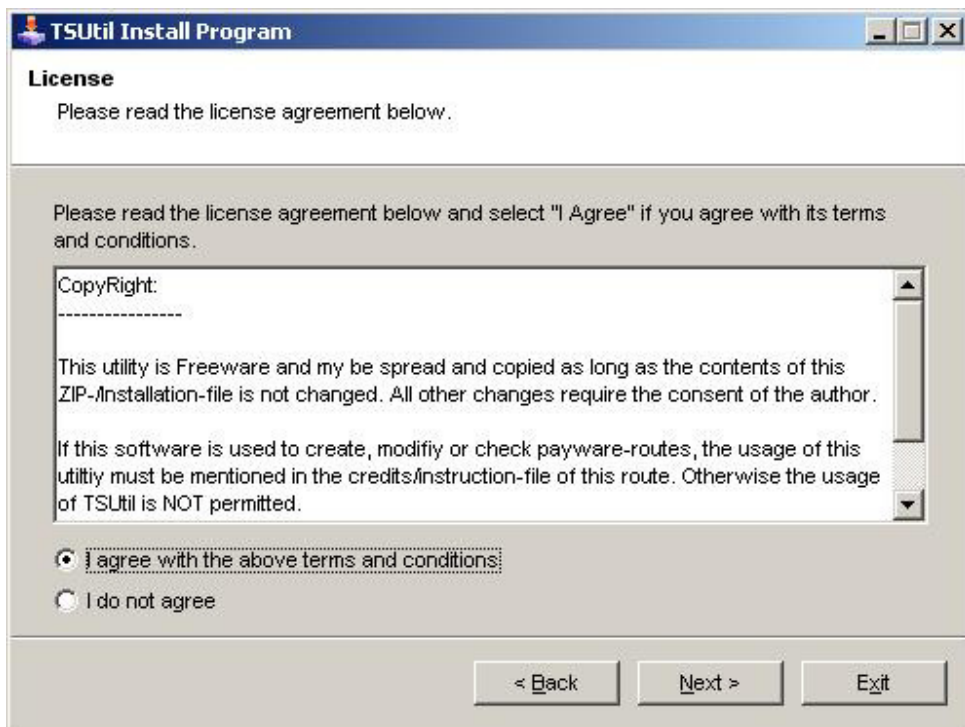


Delete all files within this directory.

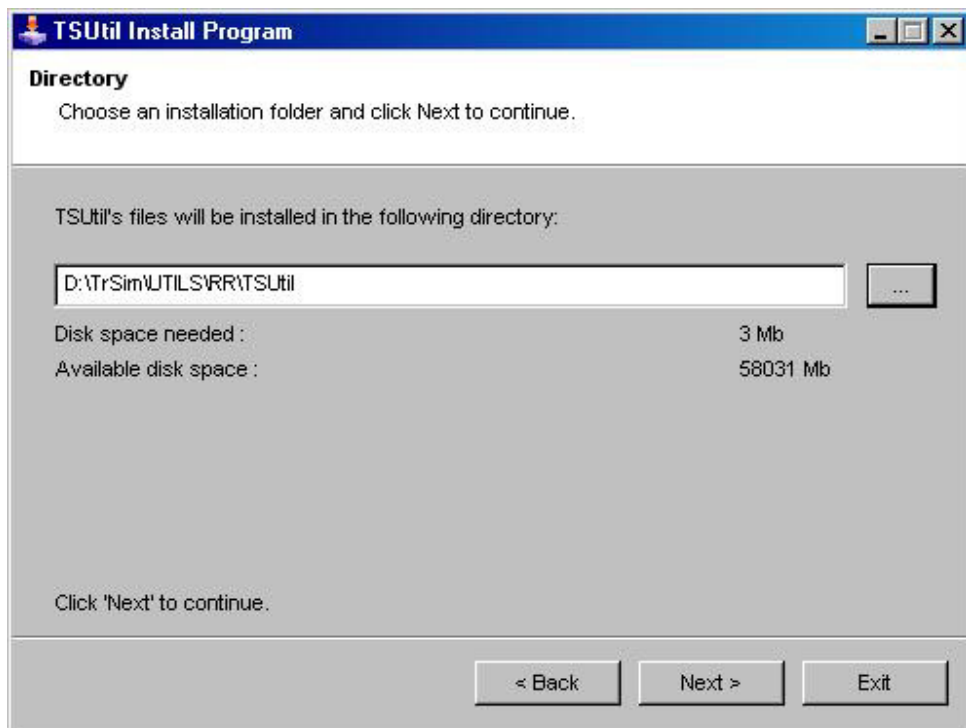
Execute 'TSUtil_EN.exe'



Click 'Next' to continue.



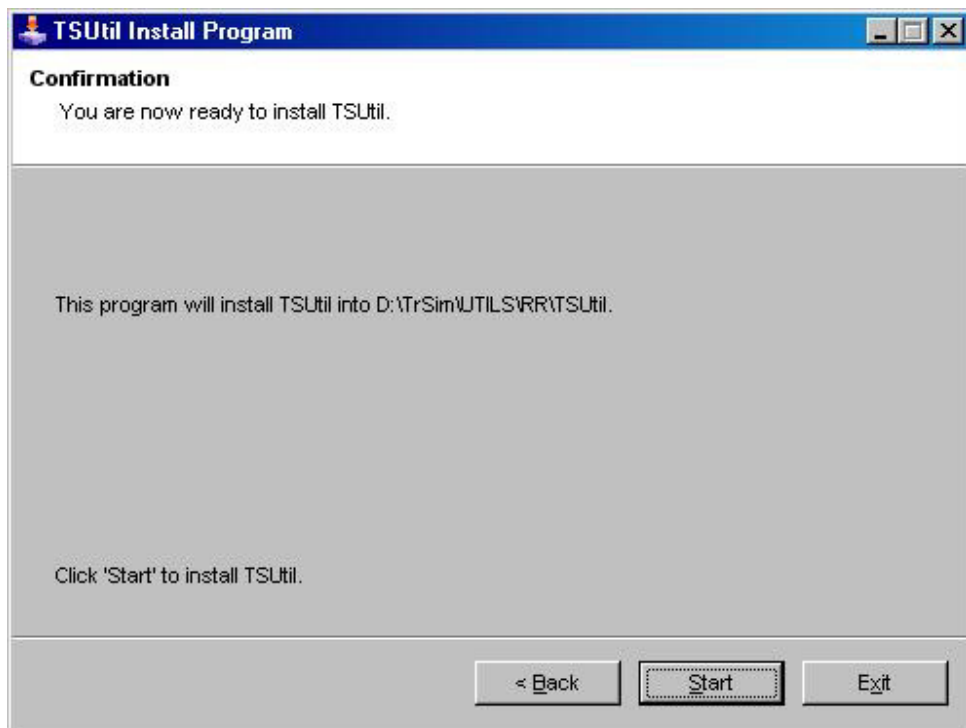
Agree with the displayed terms and click 'Next' to continue.



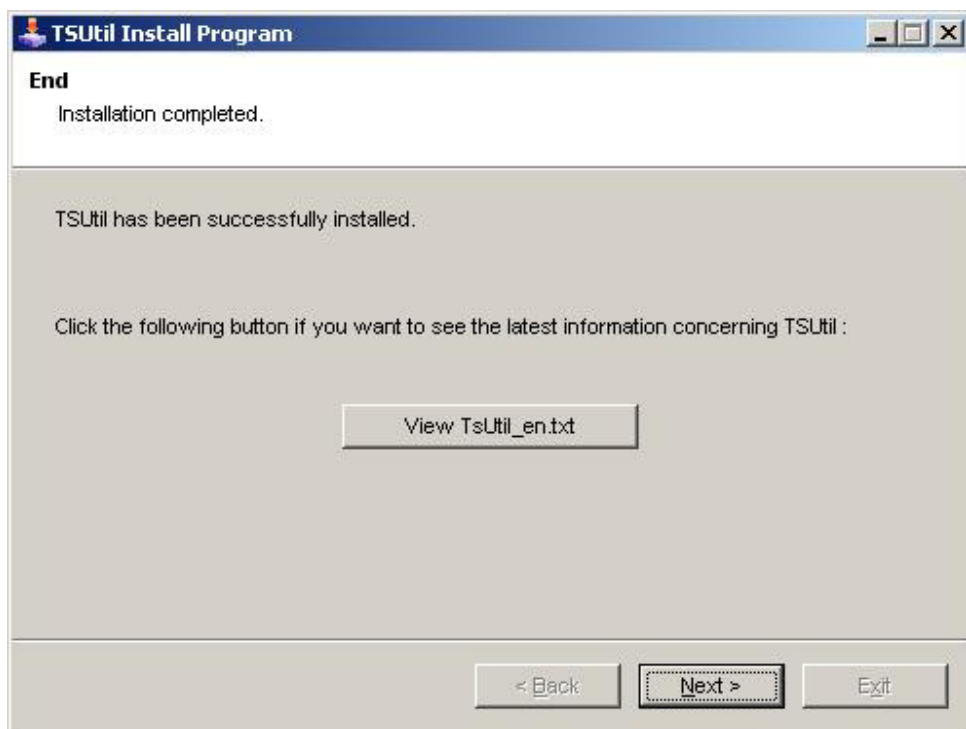
Select the correct destination-directory and click 'Next' to continue.



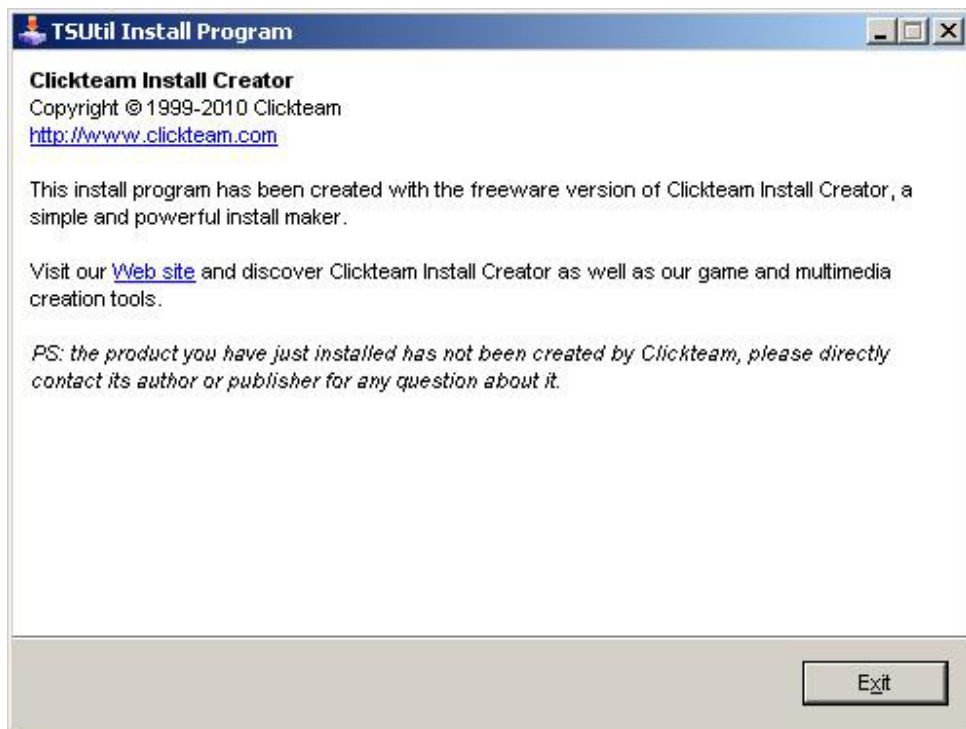
This message should not occur. However, if it is displayed, answer with 'Yes'/'Ja'.



Click 'Start' to begin with the installation. During the installation-process, a DOS-window should be created and deleted again. No message should occur within this window.

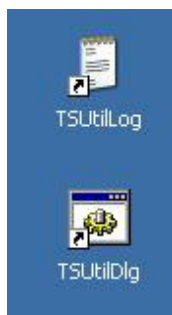


Click 'Next' to continue.



Click 'Exit' to leave the TSUtil-installationprogram.

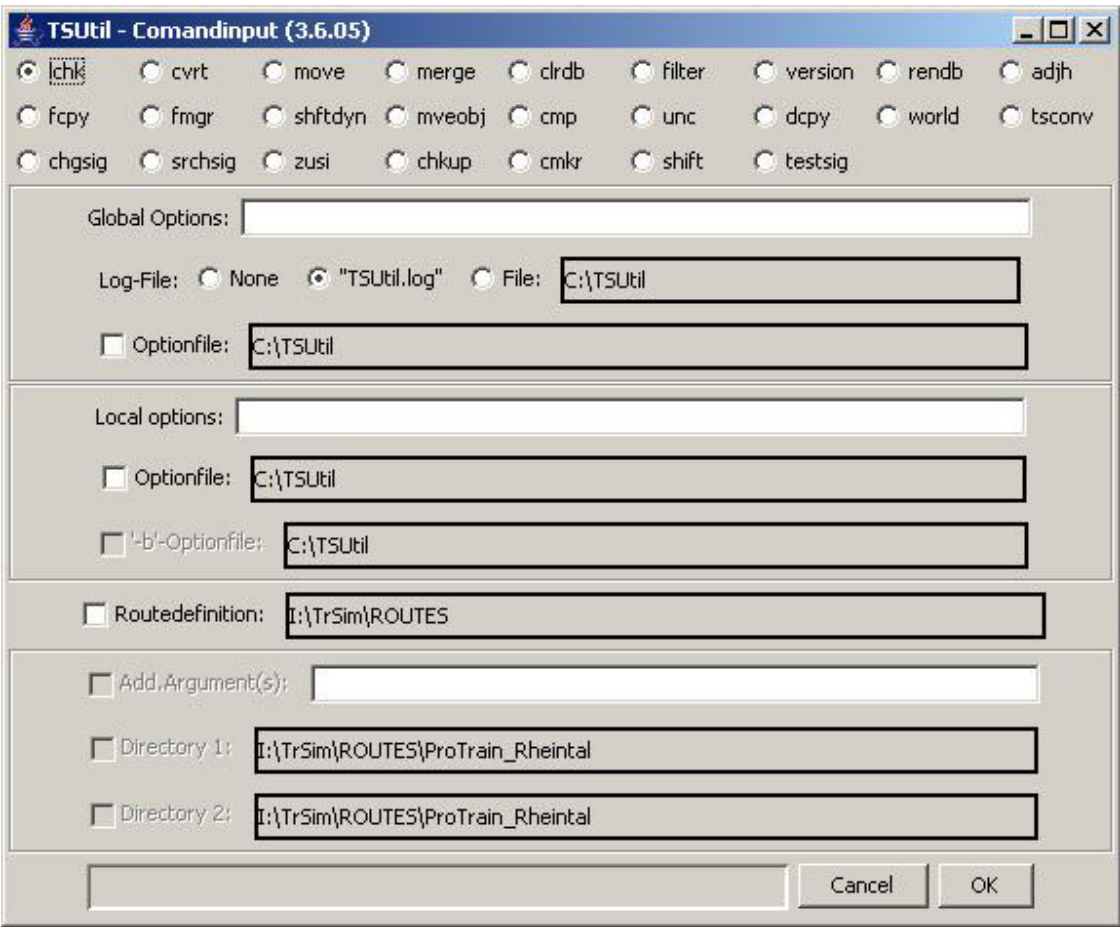
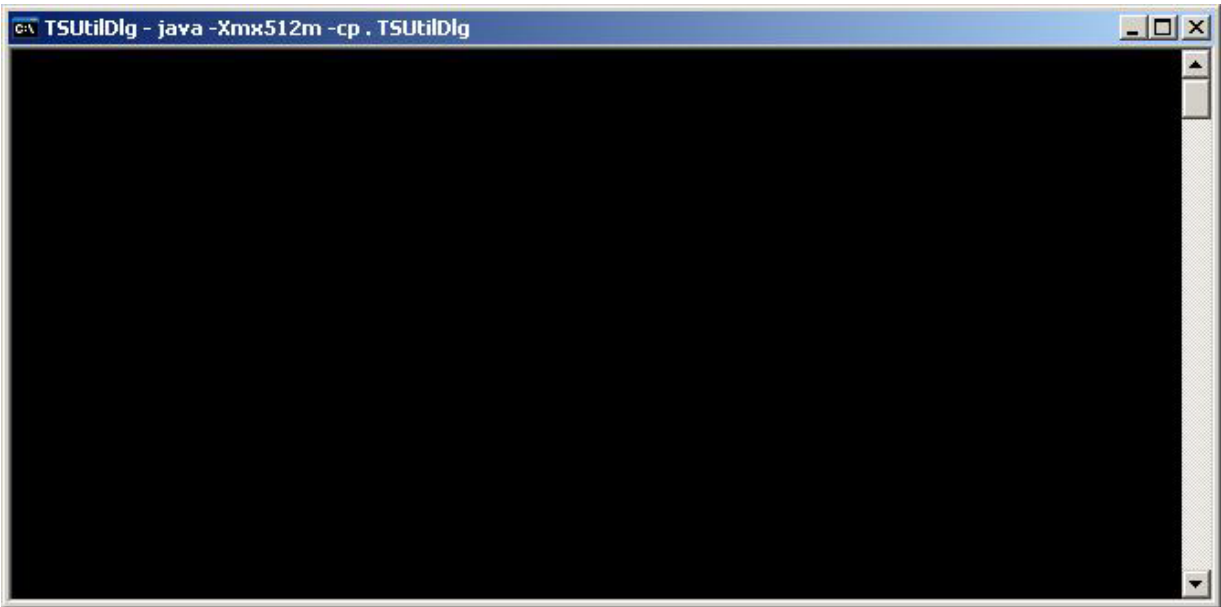
Check if the following Icons have been created:



If these Icons are NOT present, something went wrong, and a message should be send to the install-creator (CarlosHR).

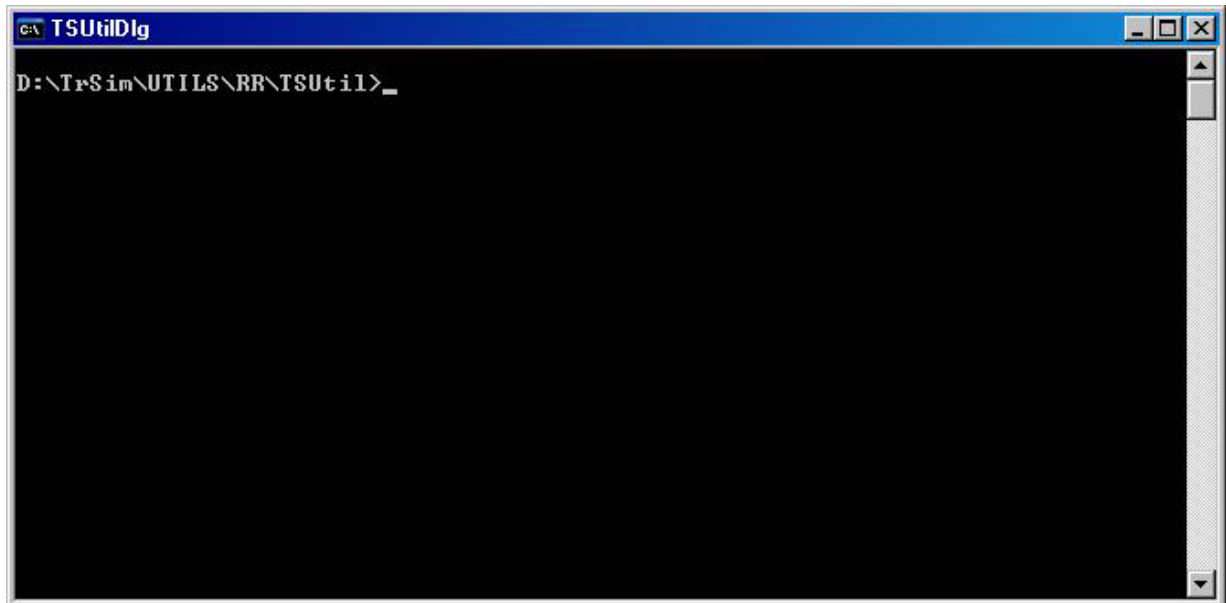
Boot your system, to assure, that all changes within the registry are visible.

After Reload of the system, double-click on 'TSUtilDlg' and the following windows should be created:



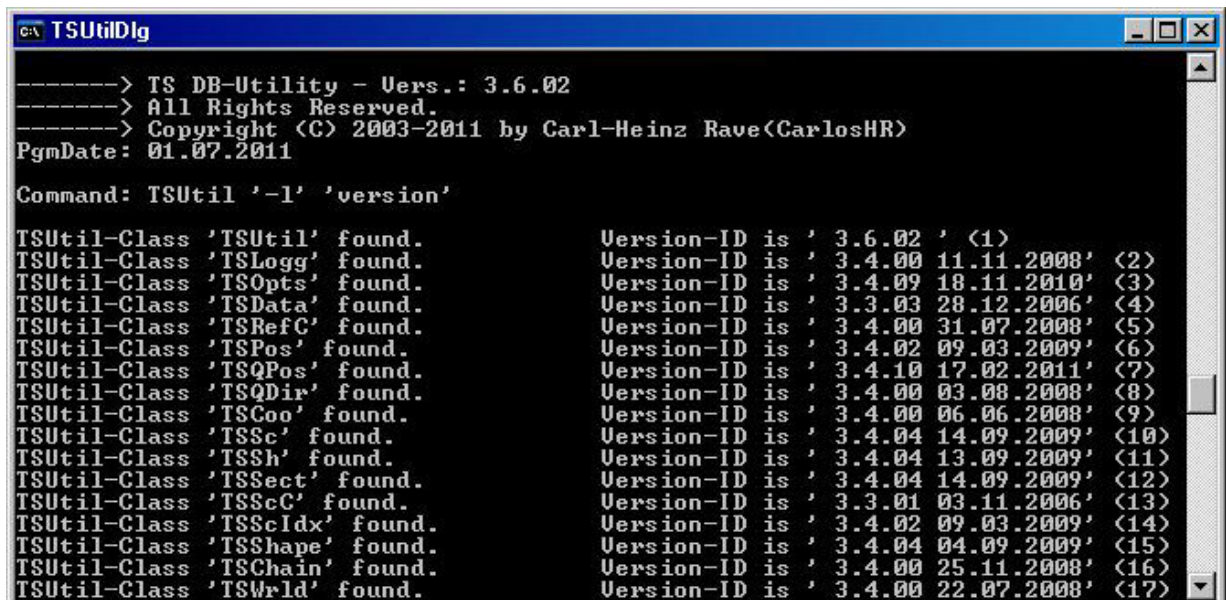
Attention: The path-definitions, which are inserted into various fields of the window, depend on your system.

Click 'Cancel' to delete the TSUtil-window. The DOS-window should change to:



Now, the window is ready to enter TSUtil-commands.

So you can check the version by entering: 'Java TSUtil -l version'
Then the window will show the following Output:



and the log-output, which can be checked when you double-click the 'TSUtilLog'-icon will show the created log-file:


```
TSUtil.log - Editor
Datei Bearbeiten Format Ansicht ?

TS DB-Utility - Vers.: 3.6.05
All Rights Reserved.
Copyright (C) 2003-2012 by Carl-Heinz Rave(CarlosHR)
PgmDate: 01.04.2012

ATTENTION! --- This version is an intermediate version (C-20120705)! Please report all problems! ---

Function called from >> OS-system:'windows xp', Version:5.1 <<
Java-system >> Java-JRE : 'sun microsystems inc.', Version:1.5.0_22 <<
>>TSUtil '-l' 'version'<<

Analyse of TSUtil-Programversion activated!
( 10.07.2012 01:47:53 )

TSUtil-Class 'TSUtil' found. Version-ID is ' 3.6.05 C-20120705' (1)
TSUtil-Class 'TSLogg' found. Version-ID is ' 3.4.00 11.11.2008' (2)
TSUtil-Class 'TSOpts' found. Version-ID is ' 3.4.09 18.11.2010' (3)
TSUtil-Class 'TSData' found. Version-ID is ' 3.3.03 28.12.2006' (4)
TSUtil-Class 'TSRefC' found. Version-ID is ' 3.4.00 31.07.2008' (5)
TSUtil-Class 'TSPos' found. Version-ID is ' 3.6.03 30.09.2011' (6)
TSUtil-Class 'TSQPos' found. Version-ID is ' 3.6.03 30.09.2011' (7)
TSUtil-Class 'TSQDir' found. Version-ID is ' 3.4.00 03.08.2008' (8)
TSUtil-Class 'TSCoo' found. Version-ID is ' 3.4.00 06.06.2008' (9)
TSUtil-Class 'TSSc' found. Version-ID is ' 3.4.04 14.09.2009' (10)
TSUtil-Class 'TSSh' found. Version-ID is ' 3.6.03 04.07.2011' (11)
TSUtil-Class 'TSSect' found. Version-ID is ' 3.4.04 14.09.2009' (12)
TSUtil-Class 'TSScC' found. Version-ID is ' 3.3.01 03.11.2006' (13)
TSUtil-Class 'TSScIdx' found. Version-ID is ' 3.4.02 09.03.2009' (14)
TSUtil-Class 'TSShape' found. Version-ID is ' 3.4.04 04.09.2009' (15)
TSUtil-Class 'TSChain' found. Version-ID is ' 3.4.00 25.11.2008' (16)
TSUtil-Class 'TSWrld' found. Version-ID is ' 3.4.00 22.07.2008' (17)
TSUtil-Class 'TSRoute' found. Version-ID is ' 3.6.05 02.12.2011' (18)
TSUtil-Class 'TSScl' found. Version-ID is ' 3.3.06 12.07.2007' (19)
TSUtil-Class 'TSSHL' found. Version-ID is ' 3.4.04 13.09.2009' (20)
TSUtil-Class 'TStrNde' found. Version-ID is ' 3.4.00 31.07.2008' (21)
TSUtil-Class 'TSVector' found. Version-ID is ' 3.4.10 04.03.2011' (22)
TSUtil-Class 'TStrItm' found. Version-ID is ' 3.4.09 02.08.2010' (23)
TSUtil-Class 'TStrItm01' found. Version-ID is ' 3.6.04 05.10.2011' (24)
TSUtil-Class 'TStrItm01T' found. Version-ID is ' 3.4.00 10.08.2008' (25)
TSUtil-Class 'TStrItm02' found. Version-ID is ' 3.4.00 14.07.2008' (26)
TSUtil-Class 'TStrItm03' found. Version-ID is ' 3.4.00 14.07.2008' (27)
TSUtil-Class 'TStrItm04' found. Version-ID is ' 3.4.06 17.02.2010' (28)
TSUtil-Class 'TStrItm08' found. Version-ID is ' 3.4.03 22.06.2009' (29)
TSUtil-Class 'TStrItm09' found. Version-ID is ' 3.3.03 12.01.2007' (30)
TSUtil-Class 'TStrItm10' found. Version-ID is ' 3.4.00 01.08.2008' (31)
TSUtil-Class 'TStile' found. Version-ID is ' 3.3.06 28.11.2007' (32)
TSUtil-Class 'TStileC' found. Version-ID is ' 3.6.03 05.07.2011' (33)
TSUtil-Class 'TSQuad' found. Version-ID is ' 3.6.03 30.09.2011' (34)
TSUtil-Class 'TSUId' found. Version-ID is ' 3.6.03 05.07.2011' (35)
TSUtil-Class 'TStrkObj' found. Version-ID is ' 3.4.01 03.03.2009' (36)
TSUtil-Class 'TSDynTrk' found. Version-ID is ' 3.6.05 28.10.2011' (37)
TSUtil-Class 'TSSignal' found. Version-ID is ' 3.3.07 16.12.2007' (38)
TSUtil-Class 'TSStatic' found. Version-ID is ' 3.4.06 22.02.2010' (39)
TSUtil-Class 'TSForest' found. Version-ID is ' 3.2.230 01.03.2006' (40)
TSUtil-Class 'TSPlatform' found. Version-ID is ' 3.4.00 10.07.2008' (41)
TSUtil-Class 'TSSiding' found. Version-ID is ' 3.4.00 10.07.2008' (42)
TSUtil-Class 'TSGantry' found. Version-ID is ' 3.6.03 26.07.2011' (43)
TSUtil-Class 'TSSpeed' found. Version-ID is ' 3.4.00 10.07.2008' (44)
TSUtil-Class 'TSCarSp' found. Version-ID is ' 3.4.00 10.07.2008' (45)
TSUtil-Class 'TSLevelCr' found. Version-ID is ' 3.4.00 10.07.2008' (46)
TSUtil-Class 'TSHazard' found. Version-ID is ' 3.4.00 10.07.2008' (47)
TSUtil-Class 'TSTransf' found. Version-ID is ' 3.2.230 01.03.2006' (48)
TSUtil-Class 'TSColli' found. Version-ID is ' 3.2.230 01.03.2006' (49)
TSUtil-Class 'TSTelep' found. Version-ID is ' 3.4.00 30.09.2008' (50)
TSUtil-Class 'TSPickup' found. Version-ID is ' 3.4.00 10.07.2008' (51)
TSUtil-Class 'TSSnd' found. Version-ID is ' 3.4.00 25.09.2008' (52)
```



```

TSUtil.log - Editor
Datei Bearbeiten Format Ansicht ?

TSUtil-Class 'TSSignal' found. Version-ID is ' 3.3.07 16.12.2007' (38)
TSUtil-Class 'TSStatic' found. Version-ID is ' 3.4.06 22.02.2010' (39)
TSUtil-Class 'TSForest' found. Version-ID is ' 3.2.230 01.03.2006' (40)
TSUtil-Class 'TSPlatform' found. Version-ID is ' 3.4.00 10.07.2008' (41)
TSUtil-Class 'TSSiding' found. Version-ID is ' 3.4.00 10.07.2008' (42)
TSUtil-Class 'TSGantry' found. Version-ID is ' 3.6.03 26.07.2011' (43)
TSUtil-Class 'TSSpeed' found. Version-ID is ' 3.4.00 10.07.2008' (44)
TSUtil-Class 'TSCarSp' found. Version-ID is ' 3.4.00 10.07.2008' (45)
TSUtil-Class 'TSLevelCr' found. Version-ID is ' 3.4.00 10.07.2008' (46)
TSUtil-Class 'TSHazard' found. Version-ID is ' 3.4.00 10.07.2008' (47)
TSUtil-Class 'TSTransf' found. Version-ID is ' 3.2.230 01.03.2006' (48)
TSUtil-Class 'TSColli' found. Version-ID is ' 3.2.230 01.03.2006' (49)
TSUtil-Class 'TSTelep' found. Version-ID is ' 3.4.00 30.09.2008' (50)
TSUtil-Class 'TSPickup' found. Version-ID is ' 3.4.00 10.07.2008' (51)
TSUtil-Class 'TSSnd' found. Version-ID is ' 3.4.00 25.09.2008' (52)
TSUtil-Class 'TSSRgn' found. Version-ID is ' 3.4.00 20.06.2008' (53)
TSUtil-Class 'TSSSrc' found. Version-ID is ' 3.3.01 05.11.2006' (54)
TSUtil-Class 'TSView' found. Version-ID is ' 3.3.04 26.02.2007' (55)
TSUtil-Class 'TSSigSh' found. Version-ID is ' 3.4.06 18.02.2010' (56)
TSUtil-Class 'TSSigSObj' found. Version-ID is ' 3.6.03 17.08.2011' (57)
TSUtil-Class 'TSSigTyp' found. Version-ID is ' 3.4.06 17.02.2010' (58)
TSUtil-Class 'TSSigSgl' found. Version-ID is ' 3.5.01 04.06.2011' (59)
TSUtil-Class 'TSSigDrSt' found. Version-ID is ' 3.5.01 05.06.2011' (60)
TSUtil-Class 'TSSigAsp' found. Version-ID is ' 0.0.000 00.00.2005' (61)
TSUtil-Class 'TSSigLTx' found. Version-ID is ' 0.0.000 00.00.2005' (62)
TSUtil-Class 'TSSigLgt' found. Version-ID is ' 0.0.000 00.00.2005' (63)
TSUtil-Class 'TSTType' found. Version-ID is ' 0.0.000 00.00.2005' (64)
TSUtil-Class 'TSAct' found. Version-ID is ' 3.4.03 23.07.2009' (65)
TSUtil-Class 'TSActA0' found. Version-ID is ' 3.4.00 29.01.2009' (66)
TSUtil-Class 'TSActEv' found. Version-ID is ' 3.4.00 02.07.2009' (67)
TSUtil-Class 'TSActSZ' found. Version-ID is ' 3.4.03 19.06.2009' (68)
TSUtil-Class 'TSPath' found. Version-ID is ' 3.3.09 20.04.2007' (69)
TSUtil-Class 'TSPatPDP' found. Version-ID is ' 3.4.00 11.08.2008' (70)
TSUtil-Class 'TSPatNde' found. Version-ID is ' 3.4.06 23.10.2009' (71)
TSUtil-Class 'TSSrv' found. Version-ID is ' 3.4.03 14.07.2009' (72)
TSUtil-Class 'TSSStp' found. Version-ID is ' 3.4.06 27.11.2009' (73)
TSUtil-Class 'TSTrf' found. Version-ID is ' 3.4.03 14.07.2009' (74)
TSUtil-Class 'TSXtSrv' found. Version-ID is ' 3.4.03 23.07.2009' (75)
TSUtil-Class 'TSSStp' found. Version-ID is ' 3.4.05 11.12.2009' (76)
TSUtil-Class 'TSTrain' found. Version-ID is ' 3.4.03 02.07.2009' (77)
TSUtil-Class 'TSSigCDef' found. Version-ID is ' 3.4.09 10.11.2010' (78)
TSUtil-Class 'TSSigCDefE' found. Version-ID is ' 3.3.08 15.01.2008' (79)
TSUtil-Class 'TSObjLst' found. Version-ID is ' 3.5.01 06.06.2011' (80)
TSUtil-Class 'TSObjDef' found. Version-ID is ' 3.5.01 06.06.2011' (81)
TSUtil-Class 'TSFile' found. Version-ID is ' 3.7.00 15.05.2012' (82)
TSUtil-Class 'TSFileS' found. Version-ID is ' 3.7.00 01.05.2012' (83)
TSUtil-Class 'TSFileT' found. Version-ID is ' 3.7.00 01.05.2012' (84)
TSUtil-Class 'TSFileW' found. Version-ID is ' 3.7.00 01.05.2012' (85)
TSUtil-Class 'TSFileX' found. Version-ID is ' 3.7.00 15.05.2012' (86)
TSUtil-Class 'TSFile$trk' found. Version-ID is ' 3.7.00 01.05.2012' (87)
TSUtil-Class 'TSFile$td' found. Version-ID is ' 3.7.00 01.05.2012' (88)
TSUtil-Class 'TSFileTok' found. Version-ID is ' 3.7.00 06.05.2012' (89)
TSUtil-Class 'TSFileStack' found. Version-ID is ' 3.7.00 07.05.2012' (90)
TSUtil-Class 'TSTexture' found. Version-ID is ' 3.6.05 01.01.2012' (91)
TSUtil-Class 'TSFileMask' found. Version-ID is ' 3.4.00 12.01.2009' (92)
TSUtil-Class 'TSByteArrIO' found. Version-ID is ' 3.7.00 02.05.2012' (93)
TSUtil-Class 'TSDeCompInputStream' found. Version-ID is ' 3.7.00 18.06.2012' (94)
TSUtil-Class 'TSNameSet' found. Version-ID is ' 3.4.06 28.10.2009' (95)
TSUtil-Class 'TSCopySet' found. Version-ID is ' 3.4.06 21.01.2010' (96)
TSUtil-Class 'TSBuf' found. Version-ID is ' 3.6.05 15.01.2012' (97)
TSUtil-Class 'TSTemp' found. Version-ID is ' 3.4.00 11.02.2009' (98)
TSUtil-Class 'TSUtilDlg' found. Version-ID is ' 3.4.03 11.05.2009' (99)
TSUtil-Class 'TSFrame' found. Version-ID is ' 3.7.00 18.06.2012' (100)

Program successful ended after 100 Class-Definitions

```

Now, the current TSUtil-Installation can be used both by RR and manual input.

When you double-click the 'TSUtilDlg'-icon, a graphic-window is created for input to TSUtil. If you like to use command-input, you can select 'Cancel' and then a DOS-Window is ready for manual call of a TSUtil-function.
(e.g. 'Java -cp . TSUtil -I adjh D:TrSim/Routes/Europe1 10')